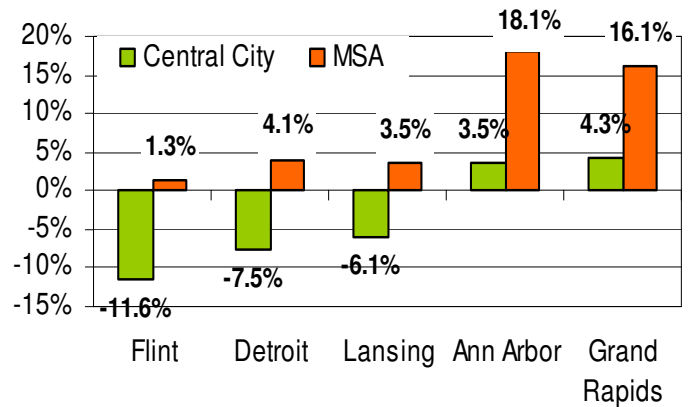


Picture Michigan Tomorrow

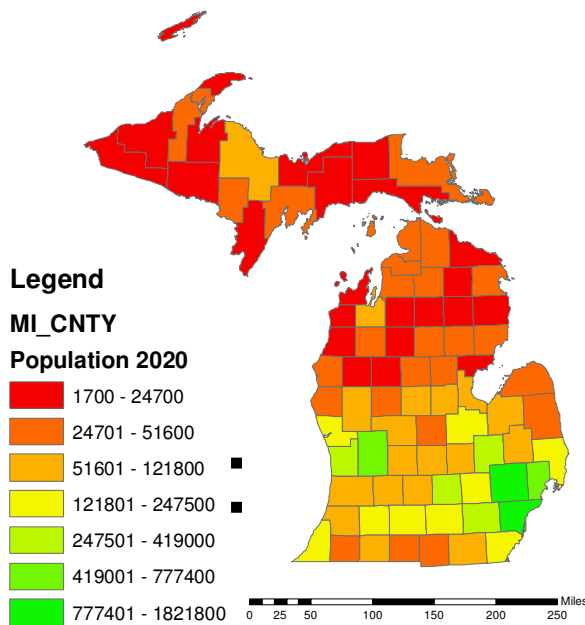
Examines the Impacts of Michigan's Projected Population Growth

Land use issues are at once pervasive and somewhat inaccessible, they encompasses planning, zoning, smart growth, agricultural preservation, and urban sprawl however, land use decisions from the state to local level have impacts outside the traditional sphere of land use policy. Urban revitalization, quality of life, community health, economic development or recovery, demographics, and the fiscal sustainability of local government are all areas directly related to land use decisions. In short land use policy is pervasive, it has far flung and often unanticipated consequences.

Michigan's Largest Cities: 1990-2000 Population

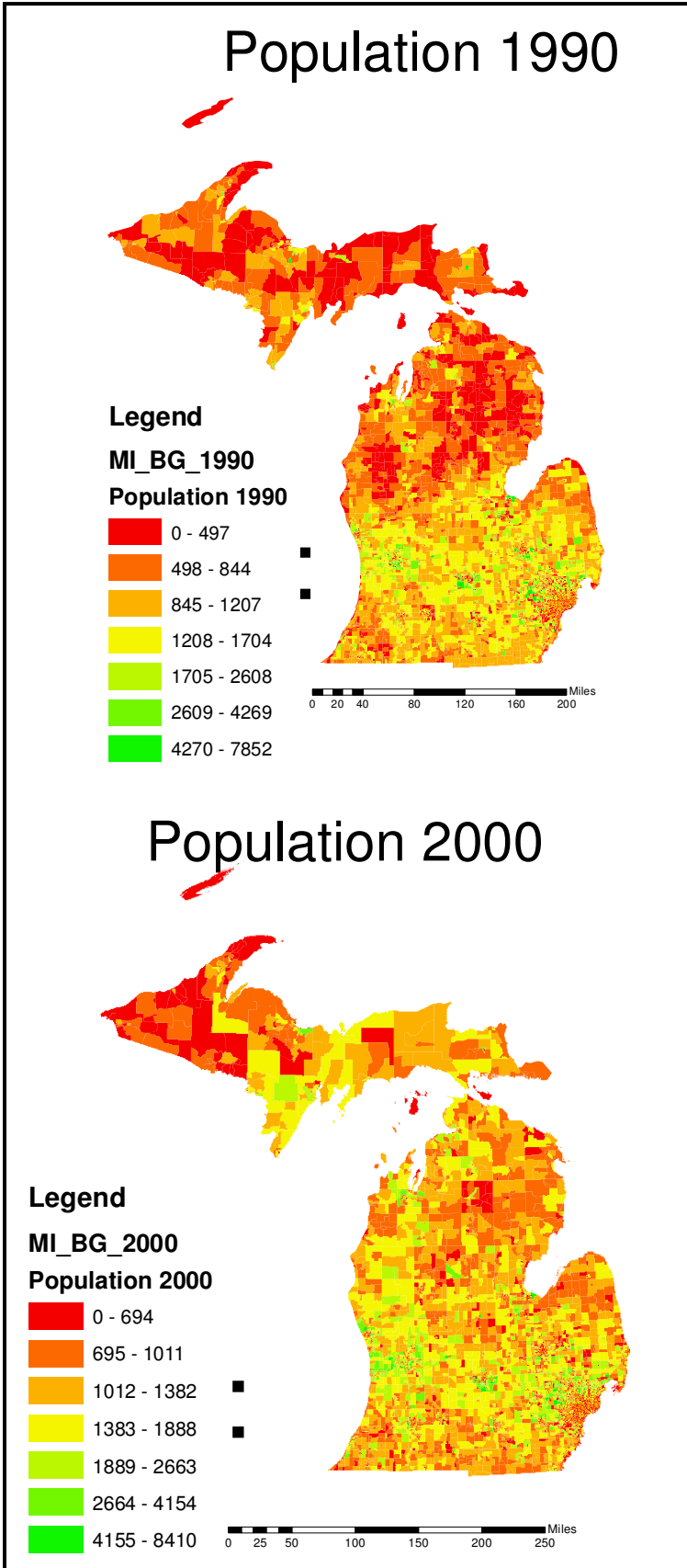


Projected 2020 Population



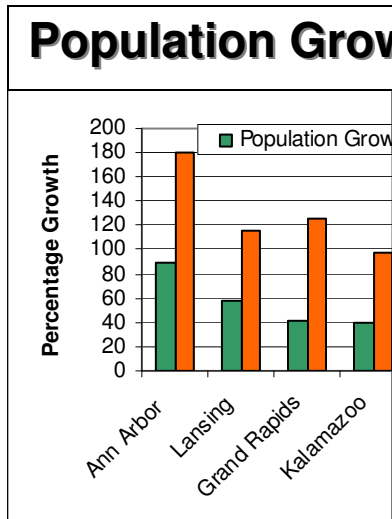
Further obfuscation of the issues comes from the fact that land use research in Michigan is bifurcated. A good deal of research has been done at the local level assessing local issues, and a good body of work exists at the statewide scale but the connections between the two scales

PICTURE MICHIGAN TOMORROW EXAMINES THE IMPACTS OF MICHIGAN'S PROJECTED POPULATION



are tenuous at best.

There exists a need for entity that can, through good science and policy analysis, connect the two scales for the present and also forecast future economic, social, environmental, and infrastructure needs. The MSU Land Policy Institute and the W.K. Kellogg Foundation's People and Land are translating land use modeling and data analysis into things that are important



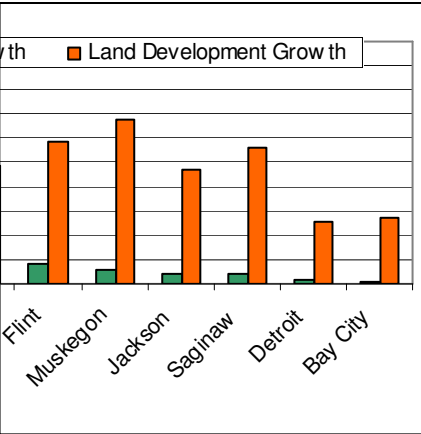
to people. Picture Michigan Tomorrow is developing new models to expand our knowledge of the impacts of land use decision making in Michigan. Part of this process is taking a closer look at Michigan's future with the goal of articulating the economic, ecological and social problems related to land use in more accessible terms, with less jargon, and fewer abstract concepts. The future of land use in Michigan is the key to the state's future economic health, quality of life, and ecological sustainability.

Michigan's Population is projected to grow by 490,000 by the year 2020 according to the Office of the State Demographer. I comparison to other states this growth is slow but it still carries significant land use and planning implications. Michigan's

PICTURE MICHIGAN TOMORROW EXAMINES THE IMPACTS OF MICHIGAN'S PROJECTED POPULATION

suburbanization rate is one of the fastest in the nation as our cities lose population to suburbs as well as rural areas. This trends shows no signs of abating and as building and buying preferences increasingly

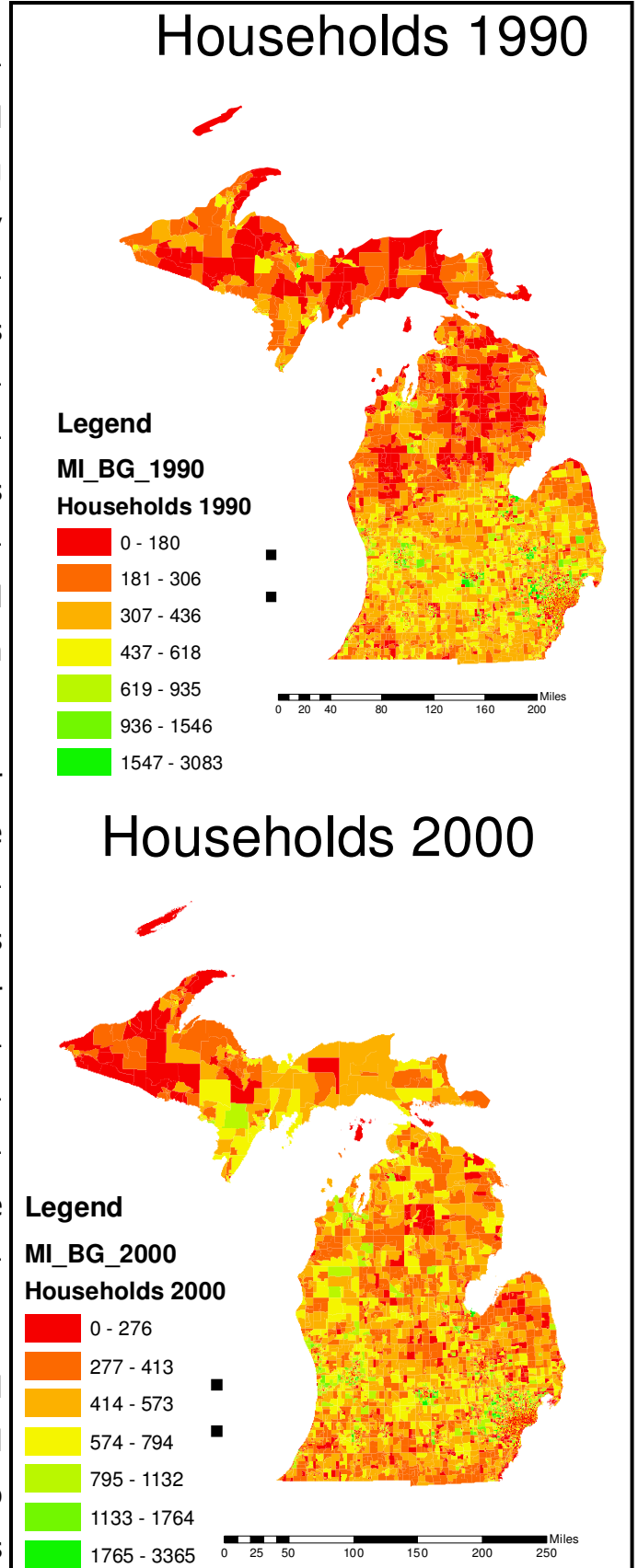
th Vs. Land Use



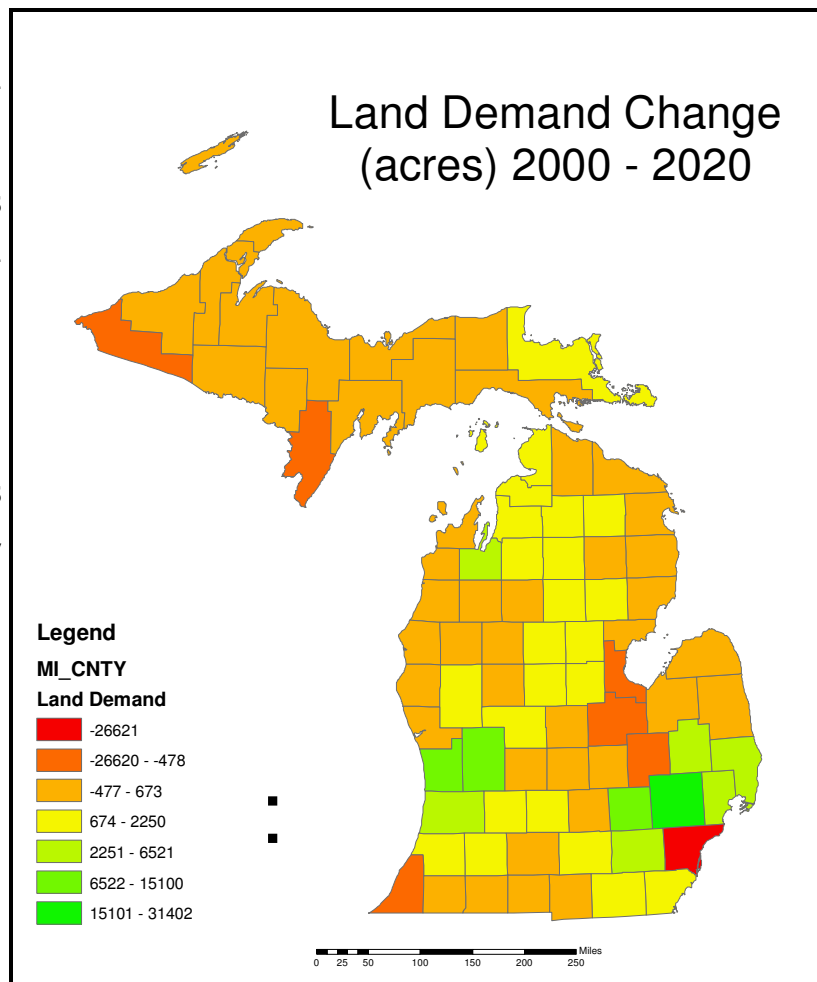
prefer larger lots for residential homes the effects on the landscape of population increase are aggravated. The purpose of this analysis is to develop a preliminary projection of land demand that population growth will generate.

Households are the primary demand units for residential property. To calculate land demand the population projections from the State of Michigan Demographers Office were converted into households by using the U.S. Census average of people per household per- county in Michigan, then this projected number of households was converted into residential acreages using data from both the U.S. Census Bureau Summary Tape File 3, and the Public Use Micro data, with error rate checking form the American Housing Survey.

Under current land use patterns Michigan will need a projected 91,328 acres of new residential property by the year 2020. This demand will have to be supplied for existing uses and agriculture has



been historically the most vulnerable to conversion, but wetlands, forests, and grasslands will also come under increasing pressure for development if our land use patterns do not change. This is the crucial link between urban areas and agricultural, ecological, and opens pace preservation. If our cities continue to decay and the real or perceived quality of life in the countryside is better we run the risk of building on the very areas that make Michigan attractive and healthy.



Michigan State University
Land Policy Institute
Soji Adelaja, Director
www.landpolicy.msu.edu
E-mail: mail@landpolicy.msu.edu
Address:
317 Manly Miles Bldg.
East Lansing, Michigan 48823

Phone: 517-432-8800
Fax: 517-432-8769

**MICHIGAN STATE
UNIVERSITY**

*MSU is an affirmative-
action, equal-
opportunity institution.*

Related Websites

Michigan Natural Features Inventory: <http://web4.msue.msu.edu/mnfi/>
Public Sector Consultants: <http://www.publicsectorconsultants.com/>
Computational Ecology: <http://www.cevl.msu.edu/pages/lulc/peopleland.htm>
People and Land: <http://www.peopleandland.org/>

Picture Michigan Tomorrow Project Team

Soji Adelaja
Bill Rustem
Yohannes Hailu
Charles McKeown
Jessica Moy
Stuart Gage
Larry Leefers
Manuel Garcia
David Lusch
Mary Beth Lake